

Population Health Trust Advisory Committee Meeting

Skagit County Board of Health
March 5th, 2015



Skagit County Board of Health - Population Health Trust

"Always working for a safer and healthier Skagit County"

*Kenneth A. Dahlstedt, Chair
Lisa Janicki, Commissioner
Ron Wesen, Commissioner*

Agenda

- Introduction, Agenda, Notes
- Process Report
- Steering Committee Suggestions
- Adopting Vision, Mission & Values
- Possible Charter
- Robert Wood Johnson Model
- Exploring a 2015 Assessment Plan
- Name the Effort
- Closing



Skagit County Board of Health - Population Health Trust

"Always working for a safer and healthier Skagit County"

*Kenneth A. Dahlstedt, Chair
Lisa Janicki, Commissioner
Ron Wesen, Commissioner*



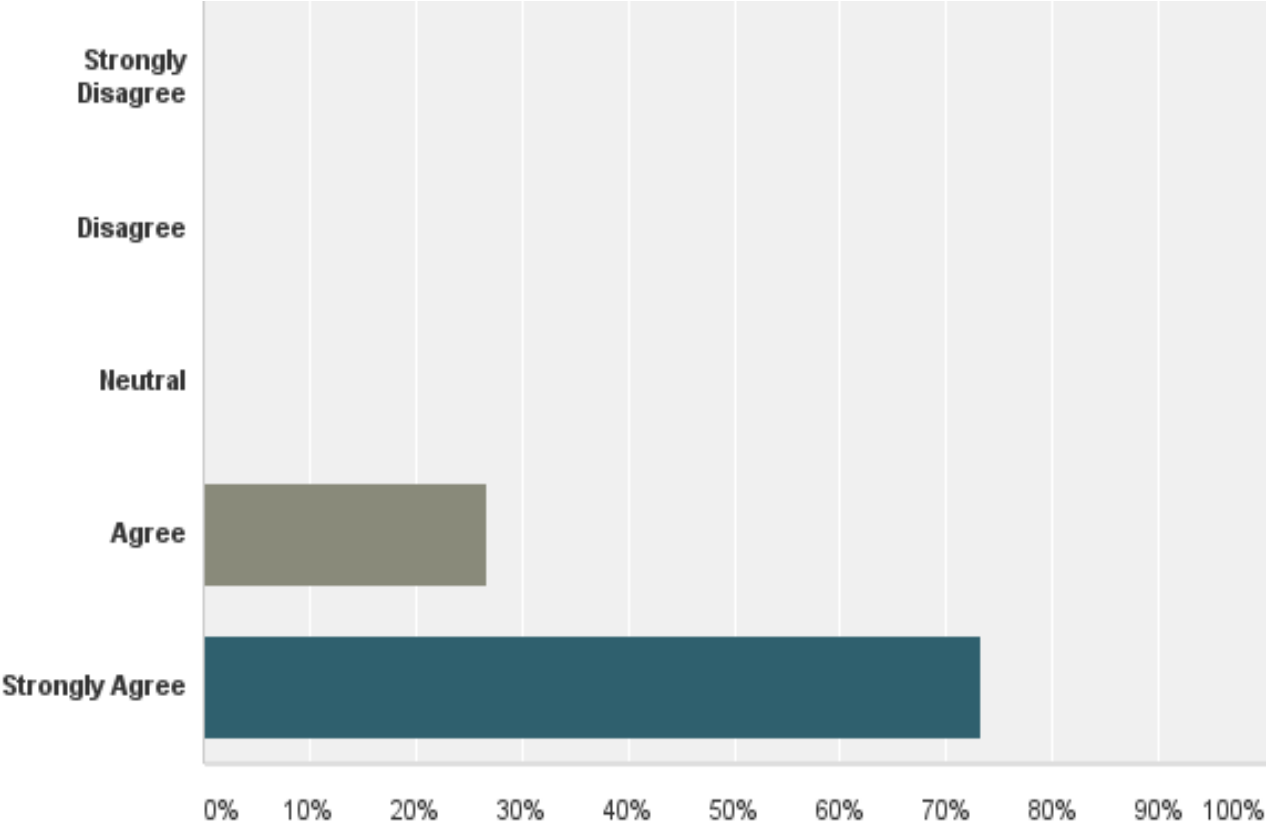
Population Health Trust Advisory Committee Process Evaluation

Date Created: Thursday, February 05, 2015

Complete Responses: 15

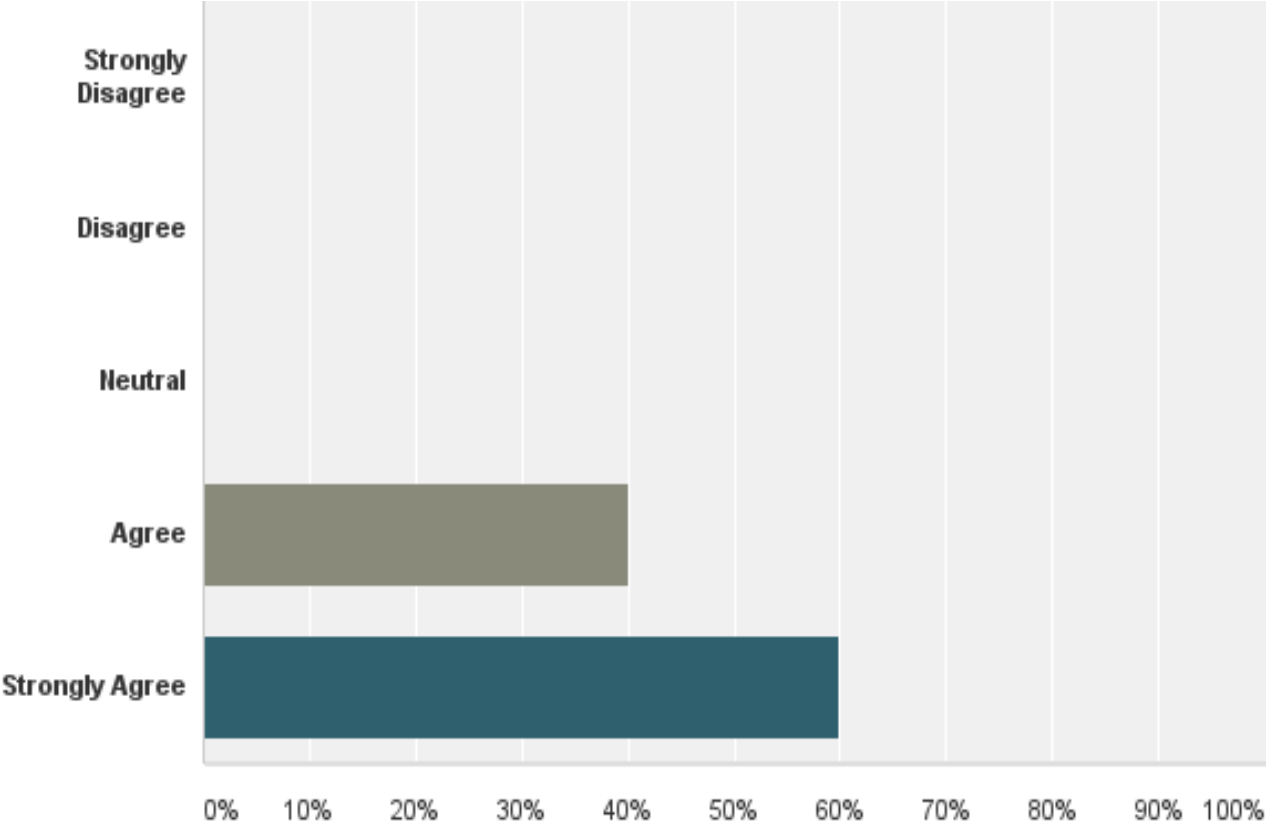
Q1: We set a tone of openness among participants.

Answered: 15 Skipped: 0



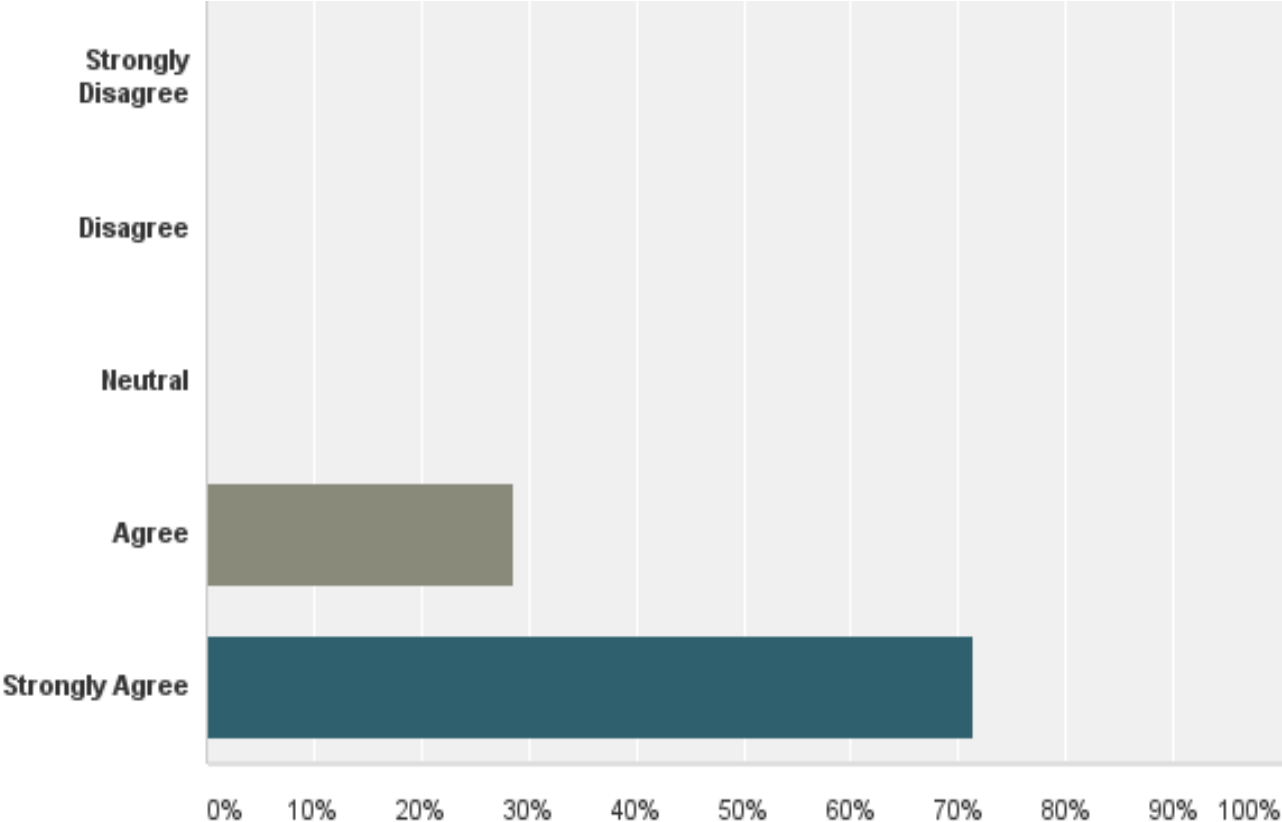
Q2: We structured a planning process that used your time well.

Answered: 15 Skipped: 0



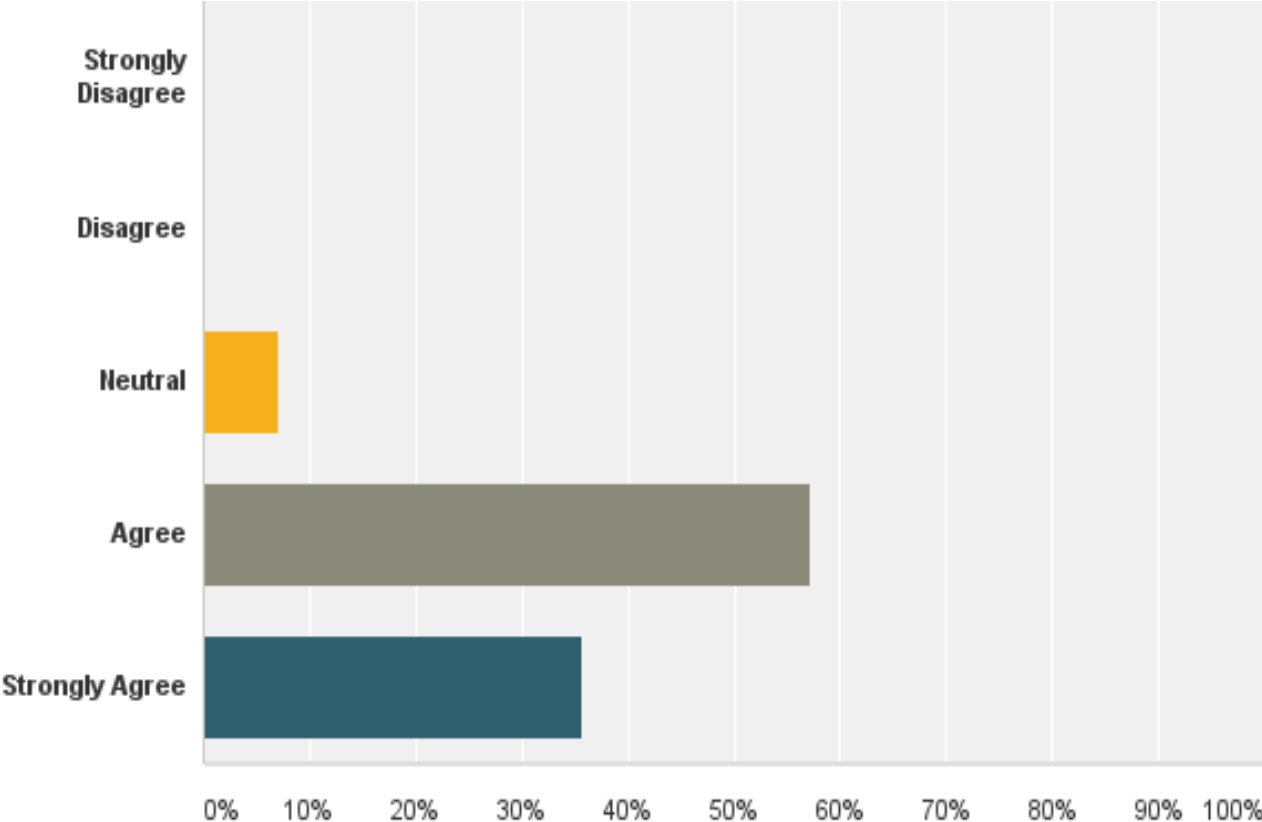
Q3: The meeting process engaged you and others as active partners.

Answered: 14 Skipped: 1



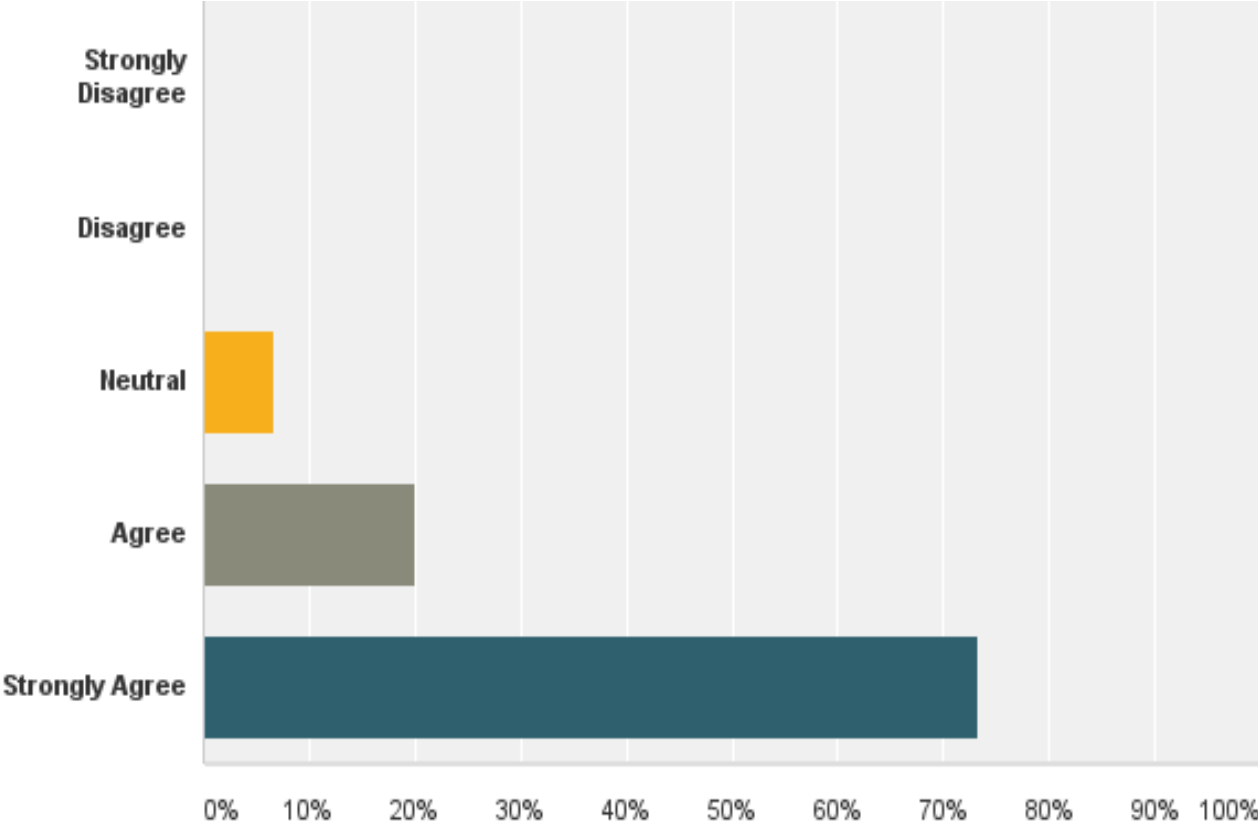
Q4: We were clear about activities, participant responsibility and expected results of the meeting.

Answered: 14 Skipped: 1



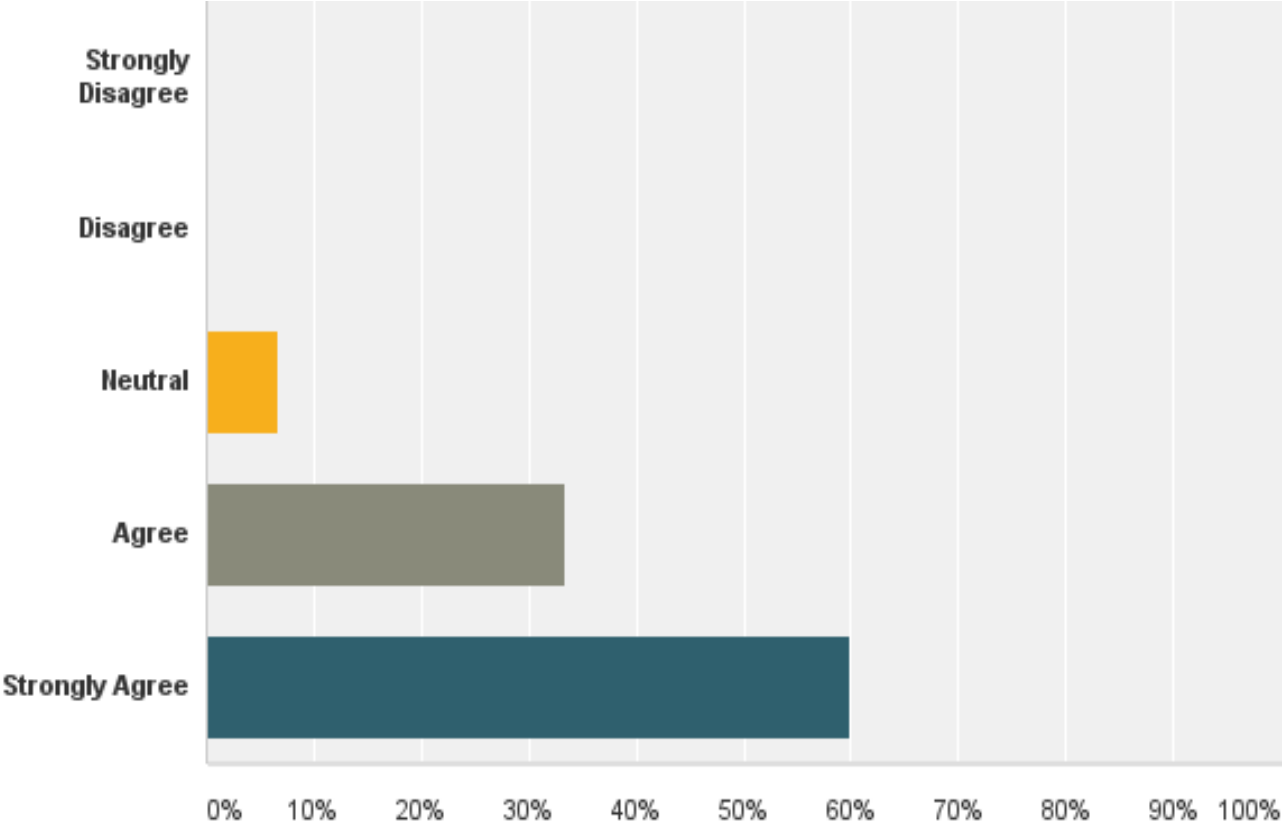
Q5: The process increased your commitment to the Trust.

Answered: 15 Skipped: 0



Q6: The meeting increased your confidence that we can create a healthier Skagit County.

Answered: 15 Skipped: 0



Steering Committee Suggestions

- Final Survey to select Vision, Mission & Name the Effort
- Important to develop Charter with Role clarification, expectations, process & team norms
- Deeper understanding of the RWJ Health Ranking Model
- Common Understanding of Collective Impact (Debra Lancaster) and Social Determinant of Health
- Opportunity for all members to explore potential gains from this work



Skagit County Board of Health - Population Health Trust

"Always working for a safer and healthier Skagit County"

*Kenneth A. Dahlstedt, Chair
Lisa Janicki, Commissioner
Ron Wesen, Commissioner*

Steering Committee Members

Lisa Janicki

Bill Henkel

Carol Hawk

Connie Davis

Debra Lancaster

Jennifer Johnson

Kari Ranten

Liz McNett Crowl

Beverly Keyes

Mark Raaka

David Jefferson



Skagit County Board of Health - Population Health Trust

"Always working for a safer and healthier Skagit County"

*Kenneth A. Dahlstedt, Chair
Lisa Janicki, Commissioner
Ron Wesen, Commissioner*

Vision Vote



N=21

- Innovative collaboratives of wellness
- A good place to work, play and live well
- Building a healthier Skagit for all



Skagit County Board of Health - Population Health Trust

"Always working for a safer and healthier Skagit County"

*Kenneth A. Dahlstedt, Chair
Lisa Janicki, Commissioner
Ron Wesen, Commissioner*

Vision Vote

A leader in growing healthy communities

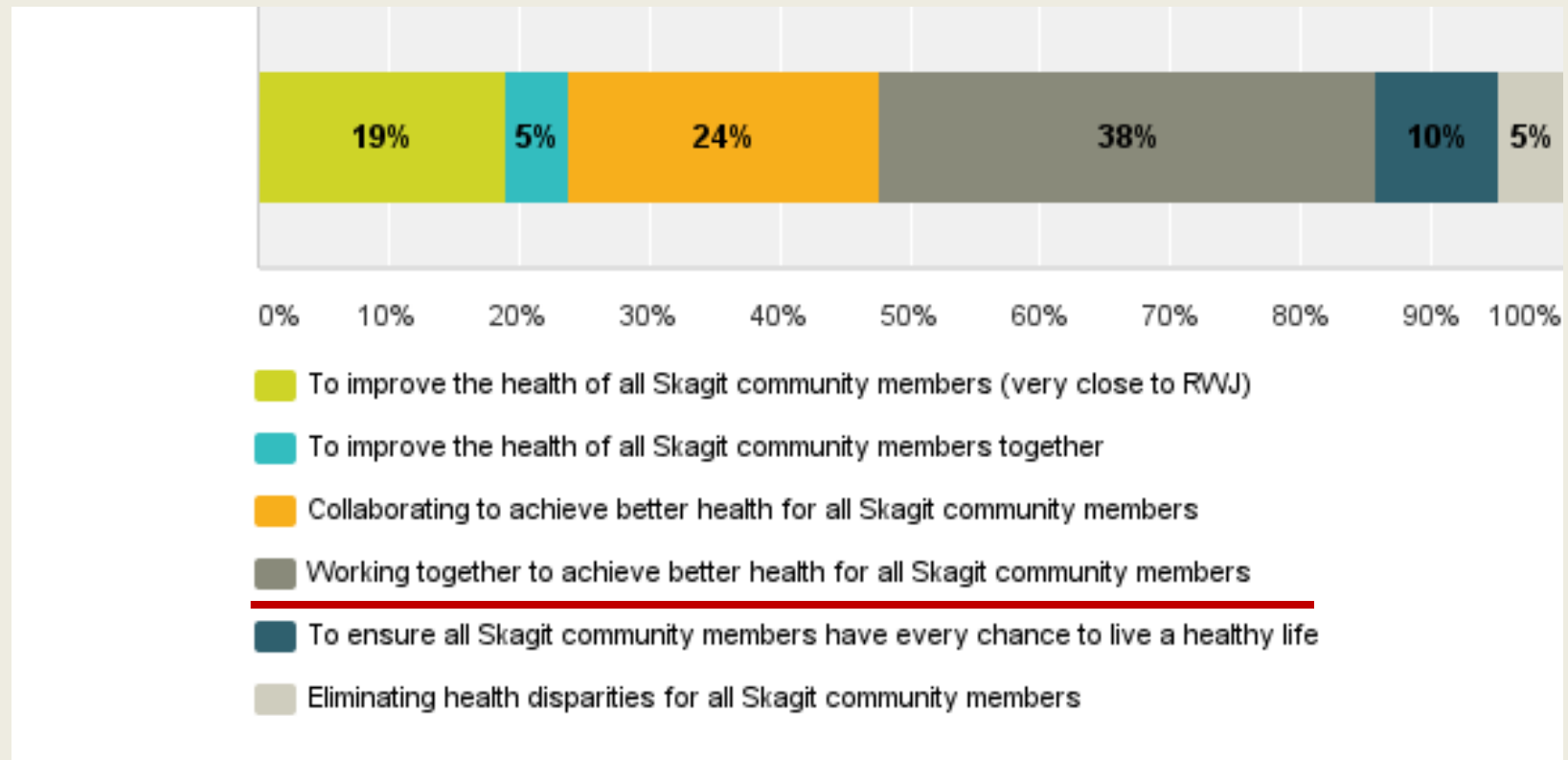


Skagit County Board of Health - Population Health Trust

"Always working for a safer and healthier Skagit County"

*Kenneth A. Dahlstedt, Chair
Lisa Janicki, Commissioner
Ron Wesen, Commissioner*

Mission Vote



- Collaborating to improve the health of all Skagit Community Members



Skagit County Board of Health - Population Health Trust

"Always working for a safer and healthier Skagit County"

*Kenneth A. Dahlstedt, Chair
Lisa Janicki, Commissioner
Ron Wesen, Commissioner*

Mission Vote

Working together to achieve better health for
all Skagit community members



Skagit County Board of Health - Population Health Trust

"Always working for a safer and healthier Skagit County"

*Kenneth A. Dahlstedt, Chair
Lisa Janicki, Commissioner
Ron Wesen, Commissioner*

Operating Values and Charter

- [See Handout](#)
- Does the value language represent us well?
- Small group to provide suggestions on the remaining parts of the Charter



Skagit County Board of Health - Population Health Trust

"Always working for a safer and healthier Skagit County"

*Kenneth A. Dahlstedt, Chair
Lisa Janicki, Commissioner
Ron Wesen, Commissioner*

The Short Version of Operating Norms

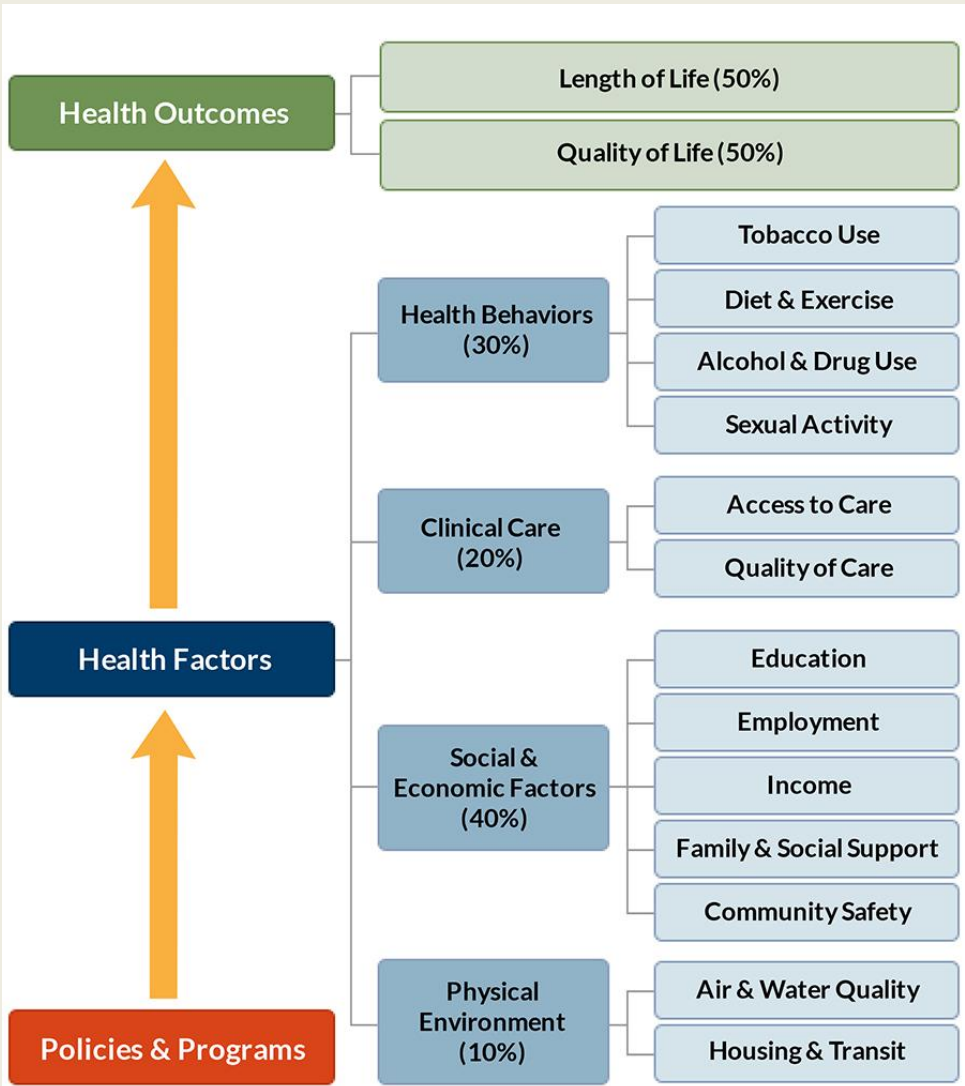
- **Start and end on time**
- **Listen to learn**
- **Use language understandable to all**
- **No side conversations or Focus on main topic**
- **Participate**
- **Show respect**
- **Decisions based on consensus**
- **Disagreements are welcome as a means to move us forward**
- **Be courteous to others in your use of electronic devices**



Skagit County Board of Health - Population Health Trust

"Always working for a safer and healthier Skagit County"

*Kenneth A. Dahlstedt, Chair
Lisa Janicki, Commissioner
Ron Wesen, Commissioner*



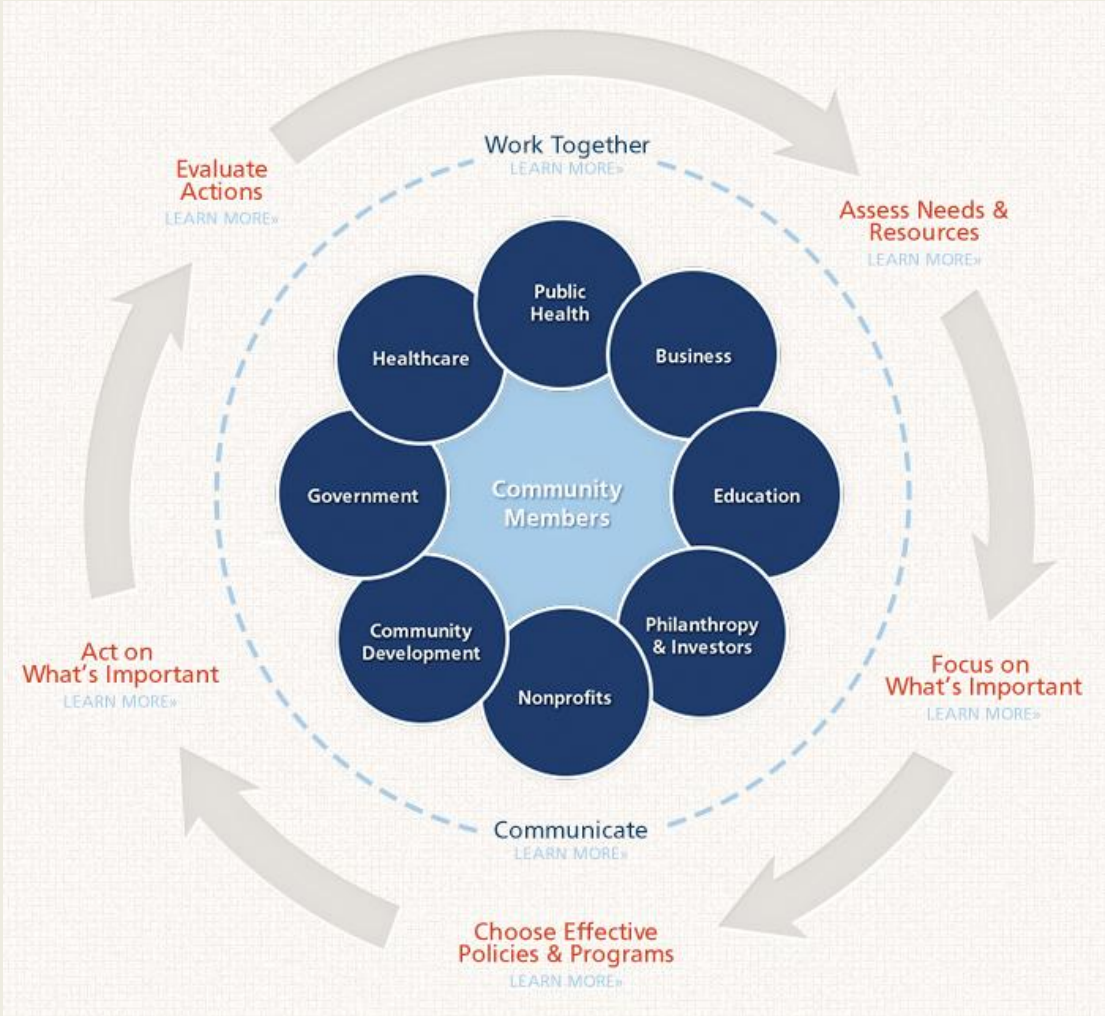
County Health Rankings model © 2014 UWPHI



Skagit County Board of Health - Population Health Trust

"Always working for a safer and healthier Skagit County"

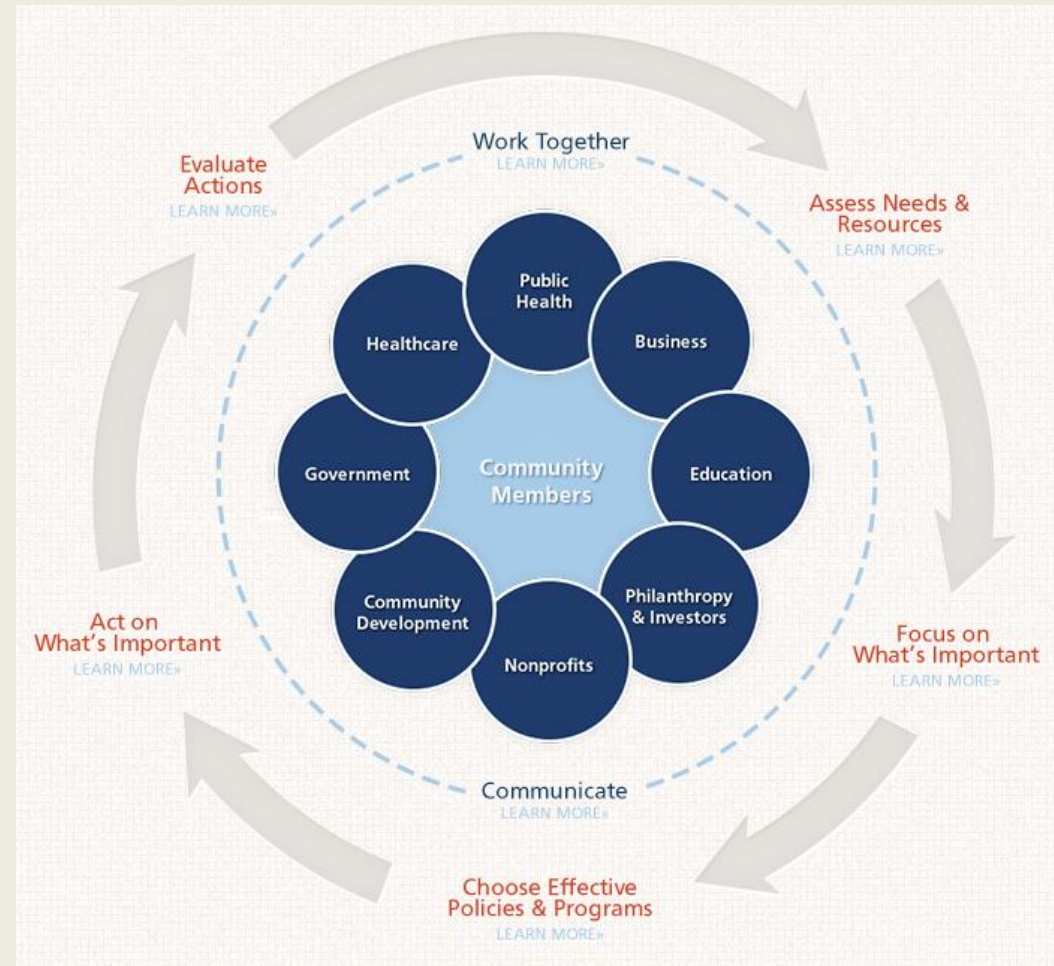
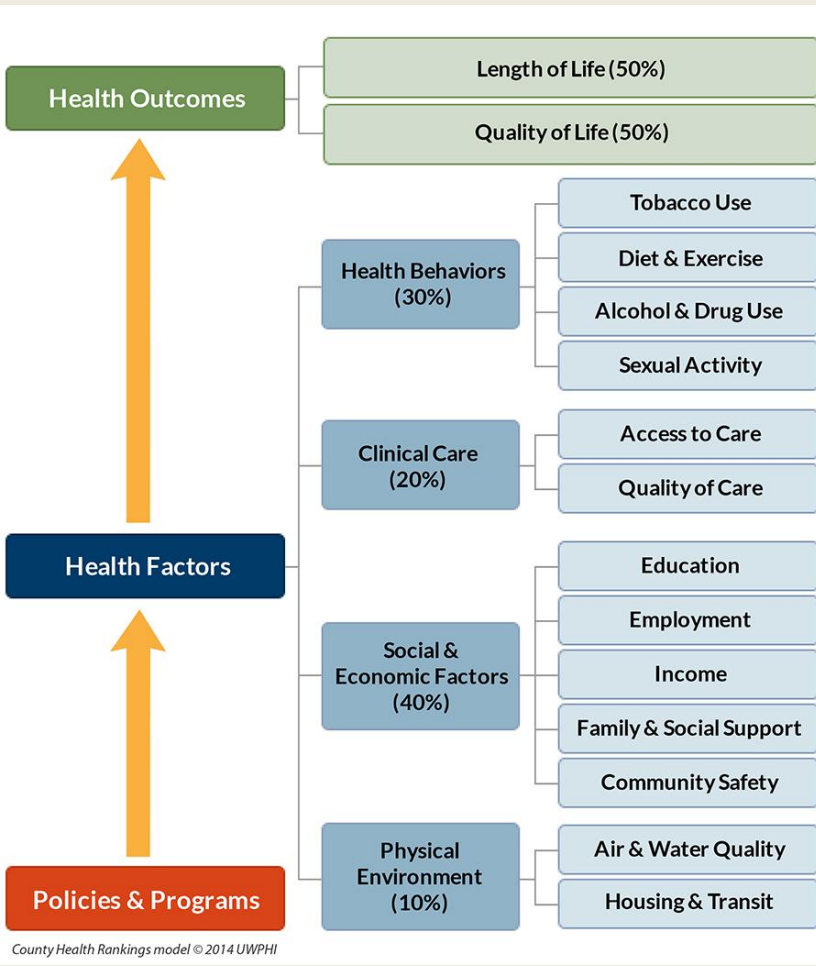
*Kenneth A. Dahlstedt, Chair
 Lisa Janicki, Commissioner
 Ron Wesen, Commissioner*



Skagit County Board of Health - Population Health Trust

"Always working for a safer and healthier Skagit County"

*Kenneth A. Dahlstedt, Chair
 Lisa Janicki, Commissioner
 Ron Wesen, Commissioner*



Skagit County Board of Health - Population Health Trust

"Always working for a safer and healthier Skagit County"

*Kenneth A. Dahlstedt, Chair
Lisa Janicki, Commissioner
Ron Wesen, Commissioner*



- At your table, use the question guide to explore the model and action center
- What else should we do to strengthen our understanding of the County Health Rankings?



Skagit County Board of Health - Population Health Trust

"Always working for a safer and healthier Skagit County"

*Kenneth A. Dahlstedt, Chair
Lisa Janicki, Commissioner
Ron Wesen, Commissioner*



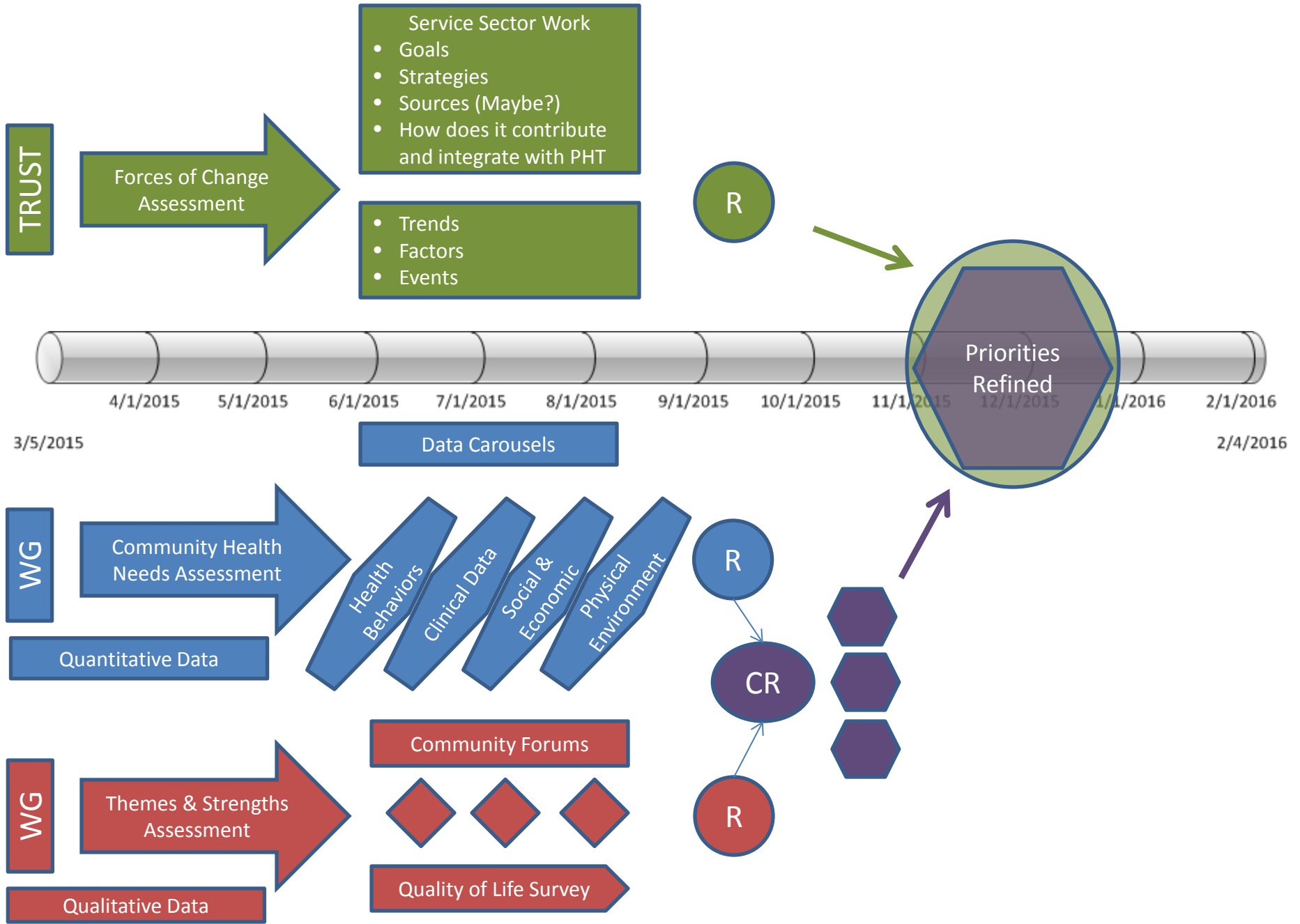
15 Minutes



Skagit County Board of Health - Population Health Trust

"Always working for a safer and healthier Skagit County"

*Kenneth A. Dahlstedt, Chair
Lisa Janicki, Commissioner
Ron Wesen, Commissioner*



TRUST

Forces of Change Assessment

- Service Sector Work
 - Goals
 - Strategies
 - Sources (Maybe?)
 - How does it contribute and integrate with PHT

- Trends
- Factors
- Events

R



4/1/2015 5/1/2015 6/1/2015 7/1/2015 8/1/2015 9/1/2015 10/1/2015 11/1/2015 12/1/2015 1/1/2016 2/1/2016

3/5/2015

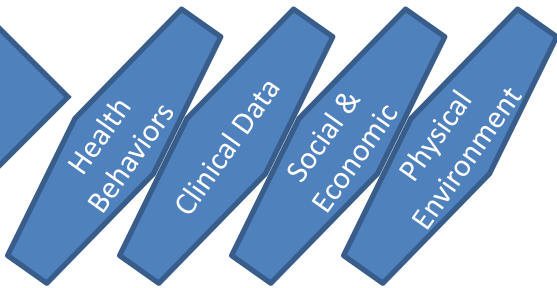
Data Carousels

2/4/2016

WG

Community Health Needs Assessment

Quantitative Data



R

CR

R



WG

Themes & Strengths Assessment

Qualitative Data

Community Forums



Quality of Life Survey

3 Assessments

- **The Community Health Status Assessment (CHSA) provides quantitative information on community health conditions. (SG)**
- **The Community Themes and Strengths Assessment (CTSA) identifies assets in the community and issues that are important to community members. (SG)**
- **The Forces of Change (FoC) Assessment identifies forces that may affect a community and opportunities. (PHT)**



Skagit County Board of Health - Population Health Trust

"Always working for a safer and healthier Skagit County"

*Kenneth A. Dahlstedt, Chair
Lisa Janicki, Commissioner
Ron Wesen, Commissioner*

- Health Assessment Work Group
- Themes and Strengths Work Group

- Resources Needed
 - Data Carousels
 - Report Writing
 - Media and participant recruitment
 - Meeting Space and Logistics



Skagit County Board of Health - Population Health Trust

"Always working for a safer and healthier Skagit County"

*Kenneth A. Dahlstedt, Chair
Lisa Janicki, Commissioner
Ron Wesen, Commissioner*



Name The Effort

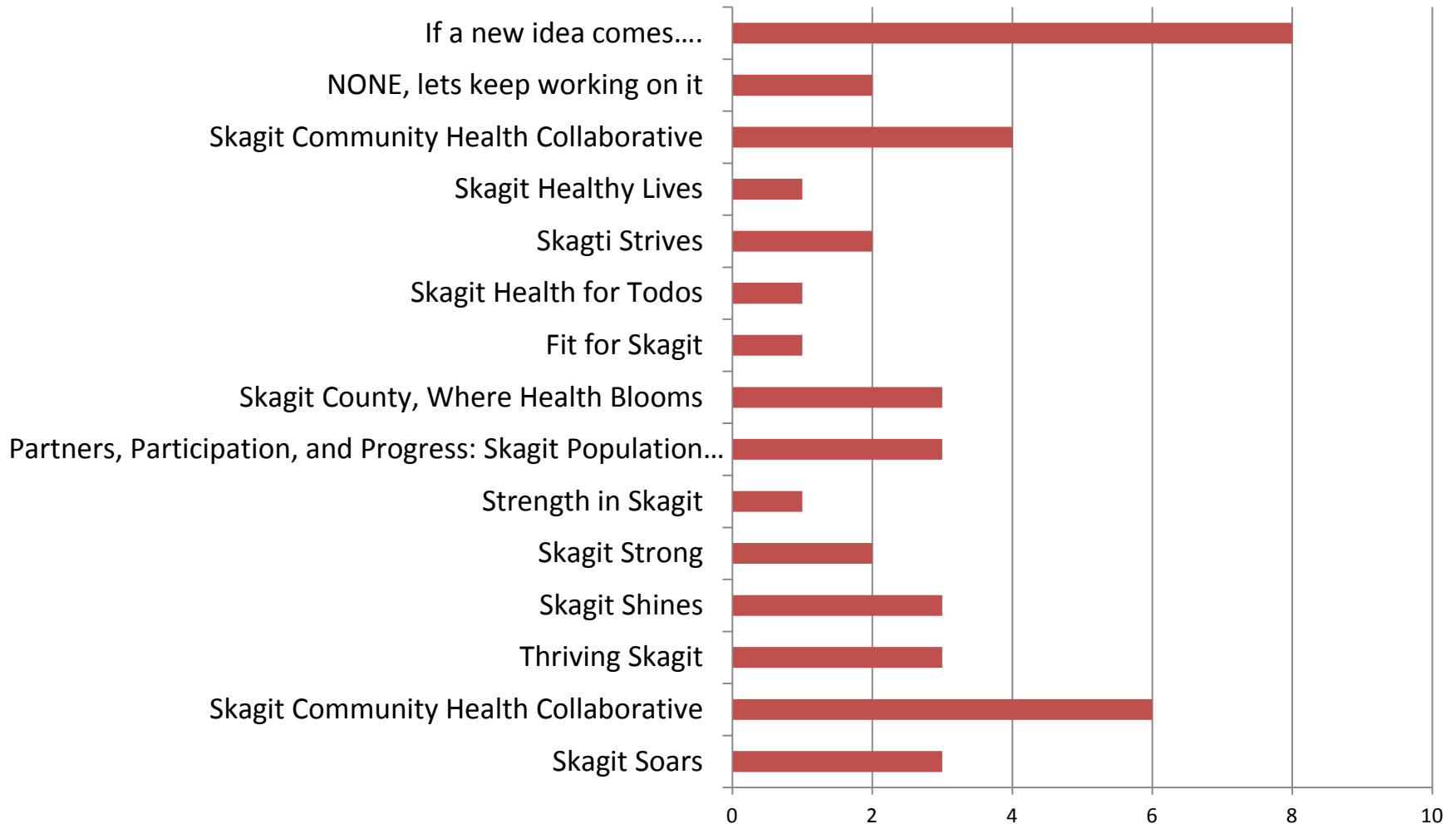


Skagit County Board of Health - Population Health Trust

"Always working for a safer and healthier Skagit County"

*Kenneth A. Dahlstedt, Chair
Lisa Janicki, Commissioner
Ron Wesen, Commissioner*

Top 3 to Name the Effort



Skagit County Board of Health - Population Health Trust

"Always working for a safer and healthier Skagit County"

*Kenneth A. Dahlstedt, Chair
Lisa Janicki, Commissioner
Ron Wesen, Commissioner*

- Skagit Health Matters
- Skagit - Creating a Healthy Tomorrow
- Strength, Sustainability, Success. Skagit!
- Skagit Healthy Communities Partnership
- Steadfast Skagit
- Synergizing Skagit
- Skagit Thrives (instead of "Thriving Skagit")
- Seeds of Success
- Plough Now Project



Skagit County Board of Health - Population Health Trust

"Always working for a safer and healthier Skagit County"

*Kenneth A. Dahlstedt, Chair
Lisa Janicki, Commissioner
Ron Wesen, Commissioner*



???



A leader in growing healthy communities



Working together to improve health for all



Skagit County Board of Health - Population Health Trust

"Always working for a safer and healthier Skagit County"

*Kenneth A. Dahlstedt, Chair
Lisa Janicki, Commissioner
Ron Wesen, Commissioner*

Closing Remarks

- **Next meeting April 9th**
- **Burlington Library**
- **Meeting: 9:00 to 12:00**

- **Next Steps**

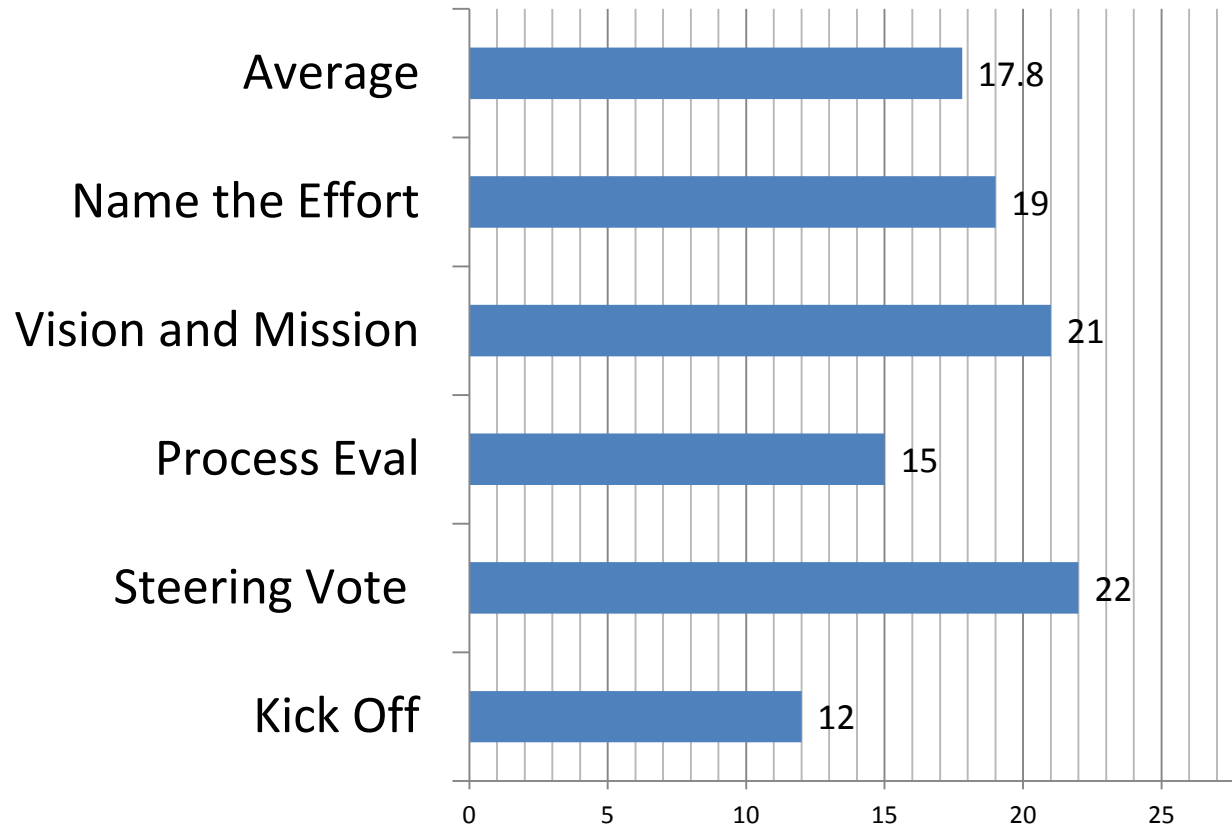


Skagit County Board of Health - Population Health Trust

"Always working for a safer and healthier Skagit County"

*Kenneth A. Dahlstedt, Chair
Lisa Janicki, Commissioner
Ron Wesen, Commissioner*

Summary of Survey Participation



Skagit County Board of Health - Population Health Trust

"Always working for a safer and healthier Skagit County"

*Kenneth A. Dahlstedt, Chair
Lisa Janicki, Commissioner
Ron Wesen, Commissioner*